

CZÁRDÁS MEDLEY

MOJA JULIŠKA ♩=120

M. Škoro/trad. K. Dražić/M. Lengyel

Musical notation for the first staff of 'MOJA JULIŠKA'. It begins with a treble clef, a key signature of one sharp (F#), and a 2/4 time signature. The tempo is marked as ♩=120. The first measure starts with a mezzo-forte (*mf*) dynamic. The melody consists of eighth and sixteenth notes.

Musical notation for the second staff of 'MOJA JULIŠKA'. It starts at measure 7. The first ending (1.) is marked with a box 'A'. The dynamic is mezzo-forte (*mf*). The second ending (2.) is marked with a box 'A' and ends with a mezzo-piano (*mp*) dynamic.

Musical notation for the third staff of 'MOJA JULIŠKA', starting at measure 16. It features a series of eighth notes with a crescendo hairpin leading to a mezzo-piano (*mp*) dynamic.

Musical notation for the fourth staff of 'MOJA JULIŠKA', starting at measure 27. It begins with a mezzo-forte (*mf*) dynamic and includes a first ending marked with a box 'B'.

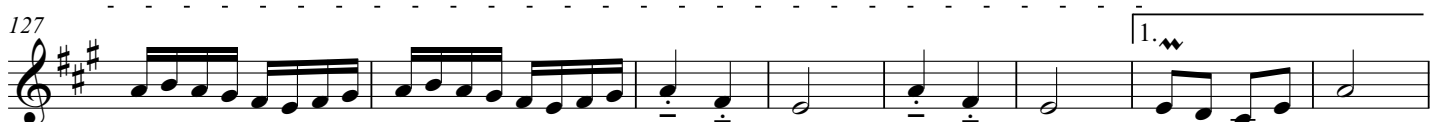
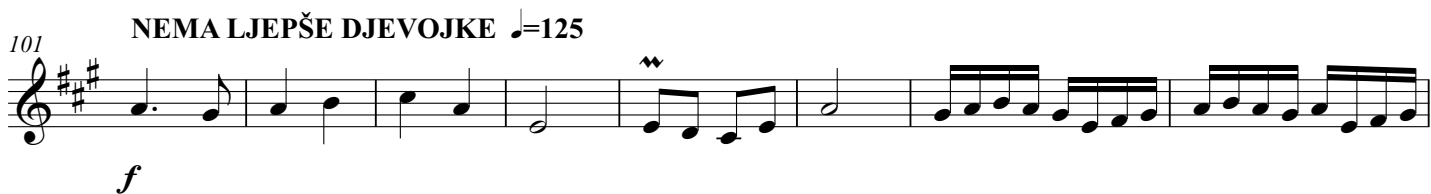
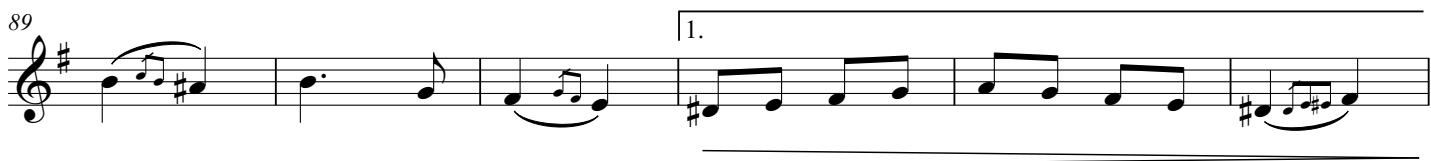
Musical notation for the fifth staff of 'MOJA JULIŠKA', starting at measure 37. It features a first ending marked with a box 'C' and a dynamic of piano (*p*), which then transitions to mezzo-piano (*mp*).

Musical notation for the sixth staff of 'MOJA JULIŠKA', starting at measure 47. It begins with a piano (*p*) dynamic and includes a crescendo hairpin leading to a mezzo-piano (*cresc.*) dynamic.

Musical notation for the seventh staff of 'MOJA JULIŠKA', starting at measure 57. It concludes the piece with a final cadence.

MOJA MALA NEMA MANE

Musical notation for the first staff of 'MOJA MALA NEMA MANE', starting at measure 64. It begins with a forte (*f*) dynamic.



let ring-----|